

8e6 Web Access Re-Authenticating
Randolph Field ISD
Written by: Kevin Lam

These Instructions show you how to get re-authenticating with Randolph Field ISD web-filter system.

1. If you got this Access Denied when you tried to access a website and the User Name is your User Name (example: rfisd\bolin), please submit the blocker URL for review.

The screenshot shows an 'ACCESS DENIED!' message with the following details:

- User/Machine: rfisd\Class of 2010\vrohawk2010
- IP: 172.24.99.154
- Category: Games
- Blocked URL: http://www.gameworld.com/

Annotations with red arrows point to:

- 'User Name' pointing to 'rfisd\Class of 2010\vrohawk2010'
- 'Category' pointing to 'Games'
- 'Blocked URL' pointing to 'http://www.gameworld.com/'
- 'For further options, [click here.](#)' pointing to the link.

Additional text at the bottom: 'To submit this blocked site for review, [click here.](#) For assistance, contact your Administrator. 8e6 R3000 Internet filtering provided by 8e6 Technologies. Copyright 2006. All rights reserved.'



2. If you got this "Access Denied" when you tried to access a website, with the username as **DEFAULT**, then you will need to re-authenticate. Click where told to. **"For further options, [click here.](#)"**

The screenshot shows an 'ACCESS DENIED!' message with the following details:

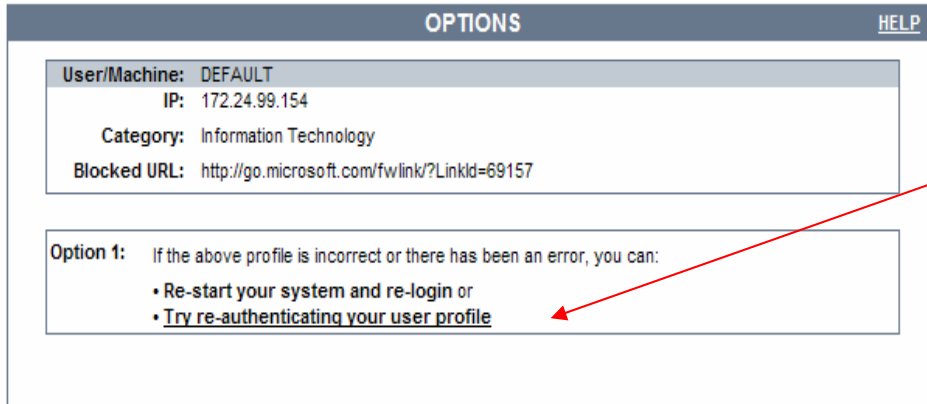
- User/Machine: DEFAULT
- IP: 172.24.99.154
- Category: Search Engines
- Blocked URL: http://www.msn.com/

Annotations with red arrows point to:

- 'DEFAULT' pointing to 'User/Machine: DEFAULT'
- 'Click here' pointing to 'For further options, [click here.](#)'

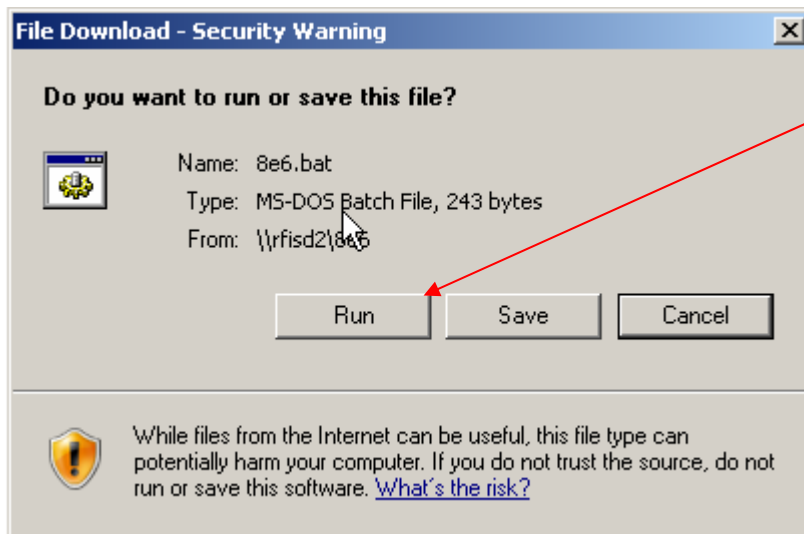
Additional text at the bottom: 'To submit this blocked site for review, [click here.](#) For assistance, contact your Administrator. 8e6 R3000 Internet filtering provided by 8e6 Technologies. Copyright 2006. All rights reserved.'

3. Click **“Try re-authenticating your user profile.”**



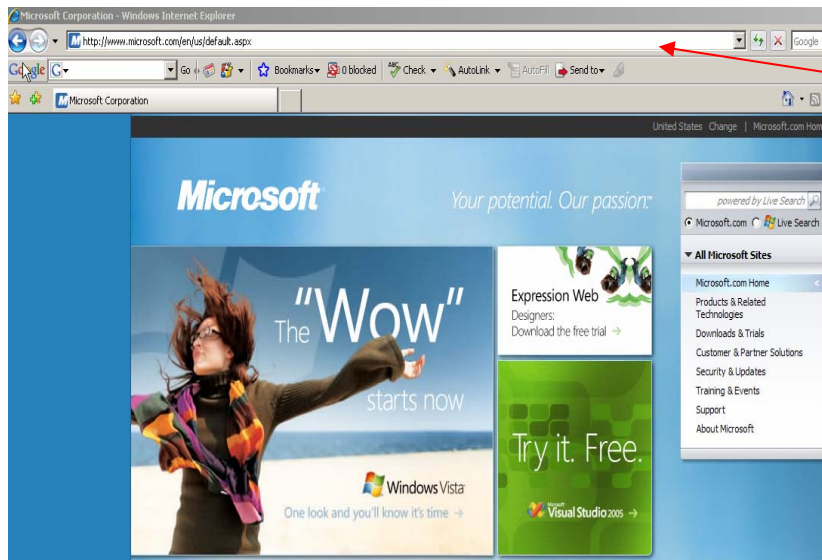
Try re-authenticating your user profile

4. This Security Warning will open. Click on **Run**.



Run

5. It will return to the same (white) page you were on in step 3, use the address bar to go to website you were being blocked from.



Address Bar