



**Welcome to  
Randolph Elementary School  
TEAM RANDOLPH...  
is red hot!!!**

**New Student Orientation  
August 19, 2010**

**Our parents serve the nation...**  
**Our school reflects the best!**



# At Randolph Elementary, we are...

- dedicated to excellence
- focused on student learning
- proud to serve our military community
- centered on our students
- **EXEMPLARY!**



# Parents as Partners

- Volunteer support
  - Parent education opportunities
  - Breakfast and lunch invitation
- \*PTO (Parent-Teacher Organization)



**Fall Carnival and Dinner**

**Scholarships for Seniors**

**Scholastic Book Fairs**

**Box Tops for Kids**

**Public Schools Week**

**Sunshine Committee**

**School Supplies**



**Open House**

**Family movie nights**

**Phone Committee**

**5th Grade Promotion**

**Homecoming Float**

**Teacher Appreciation**

**GET**

**INVOLVED!**

# GENERAL INFORMATION

- Student population
- School day/attendance – arrive at 7:55am
  - 8:00-3:15; Pre-K: 8:00-11:00am and 12:15-3:15pm
- Breakfast and lunch program \*
- Special classes (CLAMS) and PE
- Health/nursing services
- Visitor/Check-in and check-out procedures
- Technology opportunities – Internet
- Transportation

# COMMUNICATION

- **Send a note with your child**
- **E-mail us at [bessette@rfisd.net](mailto:bessette@rfisd.net)**
- **Call - and leave a voice message with the teacher**
- **Contact the office at 357-2345**
- **Information on our website [www.rfisd.net](http://www.rfisd.net)**

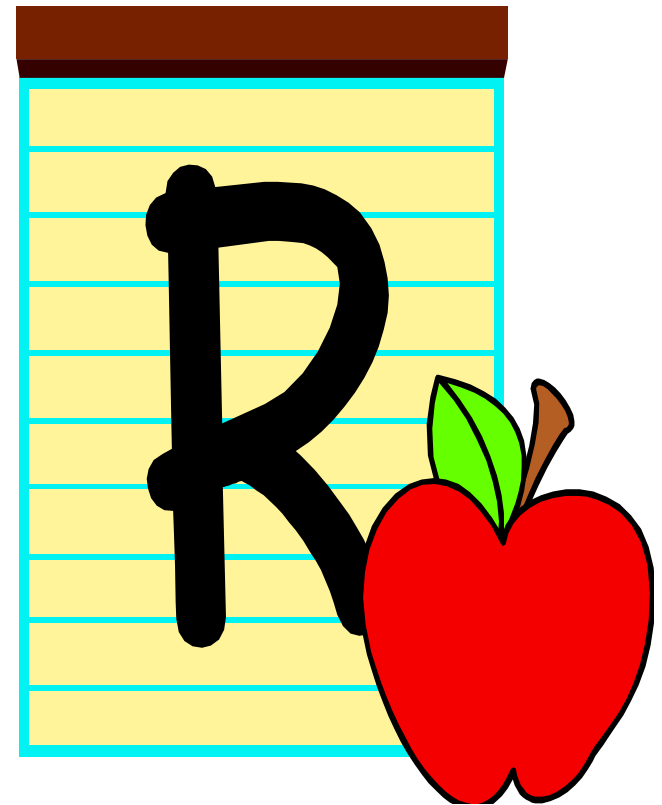


# Parents are our partners:

- Review information sent home with your child (teacher notes, bulletins, etc.)
- Day One information
  - Student Handbook, Code of Conduct on line
  - Classroom information
- Attend grade level PTO open houses
- Check our website regularly  
[www.rfisd.net](http://www.rfisd.net)

# Randolph's 3 "R's"

- Responsible
- Respectful
- Ready to learn!



# Randolph Elementary School



**THUNDERBIRDS**

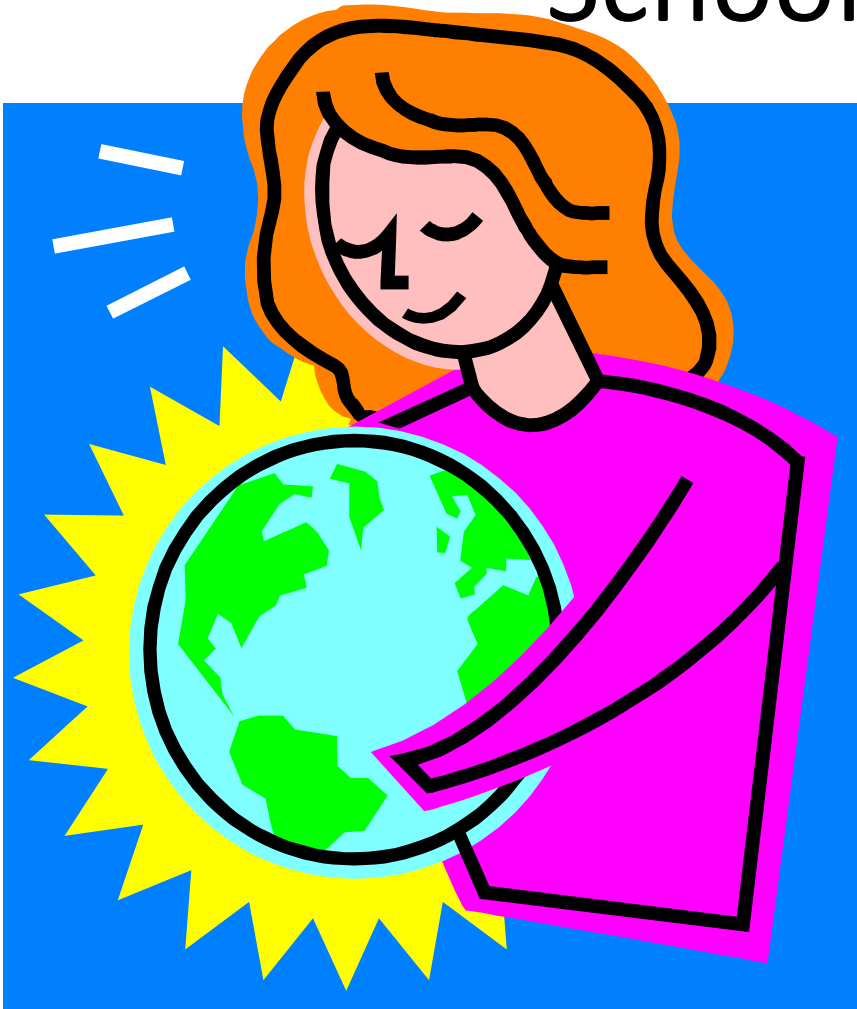
**Show your pride...wear a  
spirit shirt on Fridays!**

# SUPPORT STAFF



- Office staff
- Assistant Principal
- Counselors
- Nurse
- G/T Coordinator
- Special Education
- Reading teachers

# School lay-out



- Capital “E”
- Office on Harmon Road
- 4th and 5<sup>th</sup> on Wing I
- 2<sup>nd</sup> and 3rd on Wing II
- Special classes plus nurse and special education on Wing III
- PK-Kinder and 1<sup>st</sup> in early childhood building
- Speech therapist in early childhood building
- Playground area
- New gym

# Please be careful!

- Safety/security first
  - Observe school zones
  - Check out through the office
  - Wear a visitor sticker
  - Update info
- Parent drop-off and pick-up info



At Randolph, we love to read...

it's book time!



- Come to “Meet Your Teacher” tomorrow.
- Come READY TO LEARN on Monday.

**WE ARE SO GLAD THAT YOU ARE  
NOW A PART OF OUR TEAM!**

